

# Katrin Inclusive Soap Dispenser 1000ml - Black

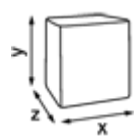
92209

- Same dispenser can be used for Liquid Wash, Foam Wash, Liquid Wash Sanitizer, Toilet Seat Sanitizer, Shower Gel
- The lock can be used with or without a key
- Easy to refill with new soap cartridge system
- The full-face push cover makes using the dispenser effortless for all people
- Braille instructions for visually impaired people
- Main raw materials of major plastic parts and lock: ABS (Acrylonitrile butadiene styrene), PC (polycarbonate), POM (polyoxymethylene)
- Katrin Inclusive dispensers are resistant to high temperatures
- Comply with UL94 Fire Safety and Fire Protection regulations (EU)



## ISO9001

### Product / Consumer pack



x 100 mm  
y 291 mm  
z 130 mm

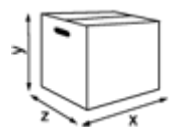


Black



0.427 kg

### Transport pack



x 108 mm  
y 303 mm  
z 138 mm



1

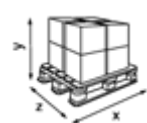


0.542 kg



6414300092209

### Transport pallet



x 800 mm  
y 1059 mm  
z 1200 mm



189

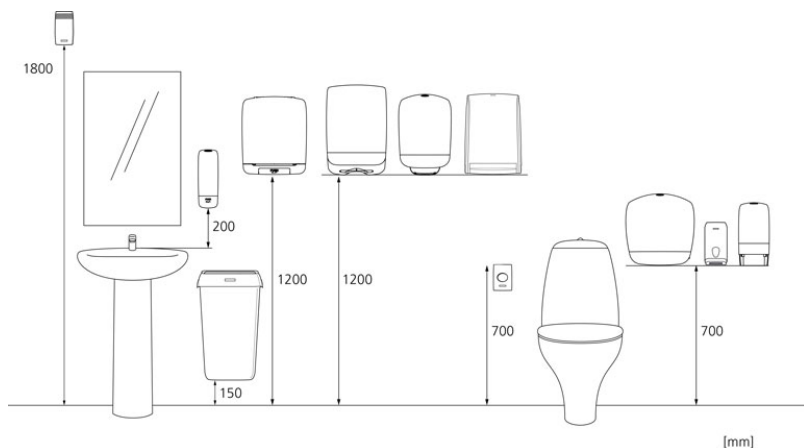


127.588 kg



6414300092216

### Measurements and installing



### Related products



88110  
**Katrin Liquid Soap  
Pure Neutral 1000  
ml**



89346  
**Katrin Hand  
Sanitizing Gel 1000  
ml**



33430  
**Katrin Sanitizing  
Foamwash 1000 ml**



32440  
**Katrin Hand  
Sanitizing Gel 1000  
ml**



3136  
**Katrin Foam Soap  
Pure Neutral 1000  
ml**



51007  
**Katrin Hand  
Sanitizing Gel 1000  
ml**



46201  
**Katrin Hand  
Sanitizing Gel 1000  
ml**



47444  
**Katrin Liquid Soap  
1000 ml Sunny  
Garden**



47420  
**Katrin Liquid Soap  
1000 ml Arctic  
Breeze**



47307  
**Katrin Foam Soap  
1000 ml Arctic  
Breeze**



47321  
**Katrin Foam Soap  
1000 ml Sunny  
Garden**



47550  
**Katrin Head &  
Body Shower Gel  
1000 ml**